

# ***Grass Canada Hardware***

## *Grass Kinvaro Lifter Systems*

*Includes:*

*F-20*

*L-80*

*S-35*

*T-105*

*T-57*

*T-65*

*T-70*

*T-71*

*T-75*

*T-76*

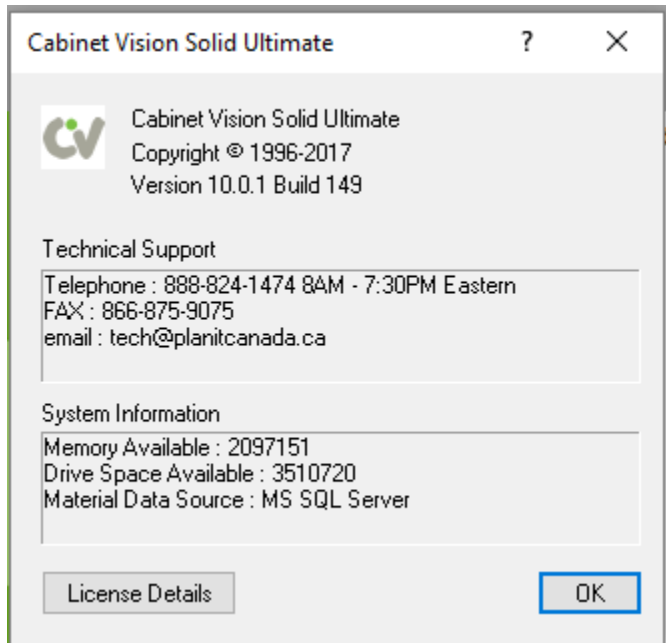


LEADING SOFTWARE SOLUTIONS

## ***The Purpose and Benefit of this Package***

Thank you for your interest in this Grass Hardware Package. This package has been created, for your use with the Grass Products. The information used is based on typical uses for the Grass Products, as indicated by Grass.

This package is compatible only with Cabinet Vision version 10 or higher. This package WILL NOT work with any previous versions of CV.



If you require any customization to this package and to book a time with a tech, please contact:

### **To Request Support**

[Click here to submit a request >](#)

### **For General Inquiries**

Click [here](#) to send us and email >

**Call us anytime at 888-824-1474**

The following Instructions will help you to import and use this package.

Enjoy!

## Package Contents

This package contains the following items:

- UCS:
  - PCI\_Grass Kinvaro v10\_0\_Attribute v1.0
  - PCI\_Grass Kinvaro v10\_0\_Case/Face Openings v1.0
  - PCI\_Grass Kinvaro v10\_0\_Modifies Plates v1.0
  - PCI\_Grass Kinvaro v10\_0\_Modifies Hinges v1.0
  - PCI\_Grass Kinvaro v10\_0\_Adds Hinge for T105 & F20
  - PCI\_Grass Kinvaro v10\_0\_Adds Plate for T105 & F20
  - PCI\_Grass Kinvaro v10\_0\_Delete Hinge for F20 v1.0
- Hinge Schedules:
  - Grass Kinvaro F-20
  - Grass Kinvaro S-35 Spring A
  - Grass Kinvaro S-35 Spring B
  - Grass Kinvaro S-35 Spring C
  - Grass Kinvaro S-35 Spring D
  - Grass Kinvaro S-35 Spring E
  - Grass Kinvaro T-105 Black
  - Grass Kinvaro T-105 Standard
  - Grass Kinvaro T-57
  - Grass Kinvaro T-65
  - Grass Kinvaro T-70
  - Grass Kinvaro T-71
  - Grass Kinvaro T-75
  - Grass Kinvaro T-76

## General Notes

- It is **STONGLY** recommended that you create a backup of your current database prior to importing this package. See the **Backup and Transferring Standards** topic, in the Solid help file for more information.
- This package was created using metric standards.
- Values used can be changed to reflect the sizes used in your shop.
- Some extra machining, that has been added to the hardware in the models, is NOT accessible for all versions. The hardware is intended to work as is, using the typical specs provided by GRASS Canada INC.
- This package is NOT intended for versions prior to Cabinet Vision version 10.
- Please report any problems with this package to [tech@planitcanada.ca](mailto:tech@planitcanada.ca).

- The contents of this package can be freely modified to suit your needs, however if it fails to function correctly after modification, then you can resolve this by doing one of the following:
  - Re-import the original package and allow it to overwrite existing items.
  - Contact Technical Support to book a time with a tech:

To Request Support

[Click here to submit a request >](#)

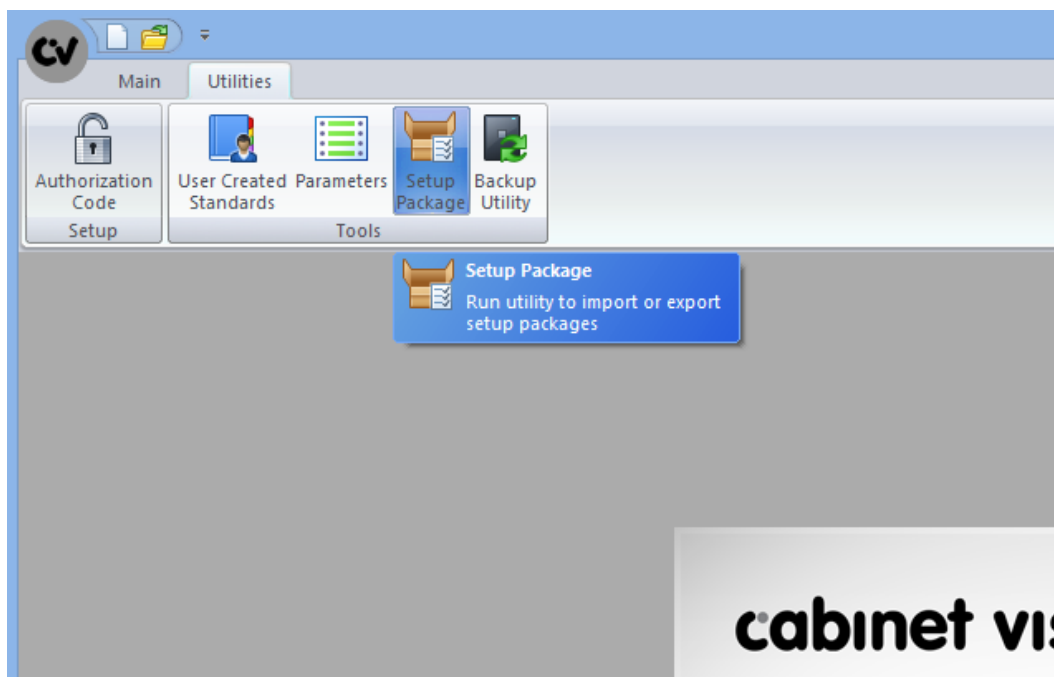
For General Inquiries

Click [here](#) to send us and email >

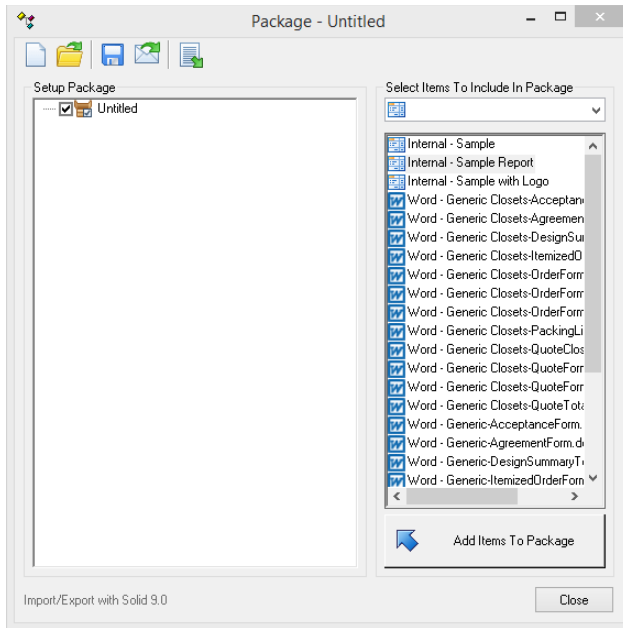
Call us anytime at 888-824-1474


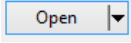
## Importing the Grass Package

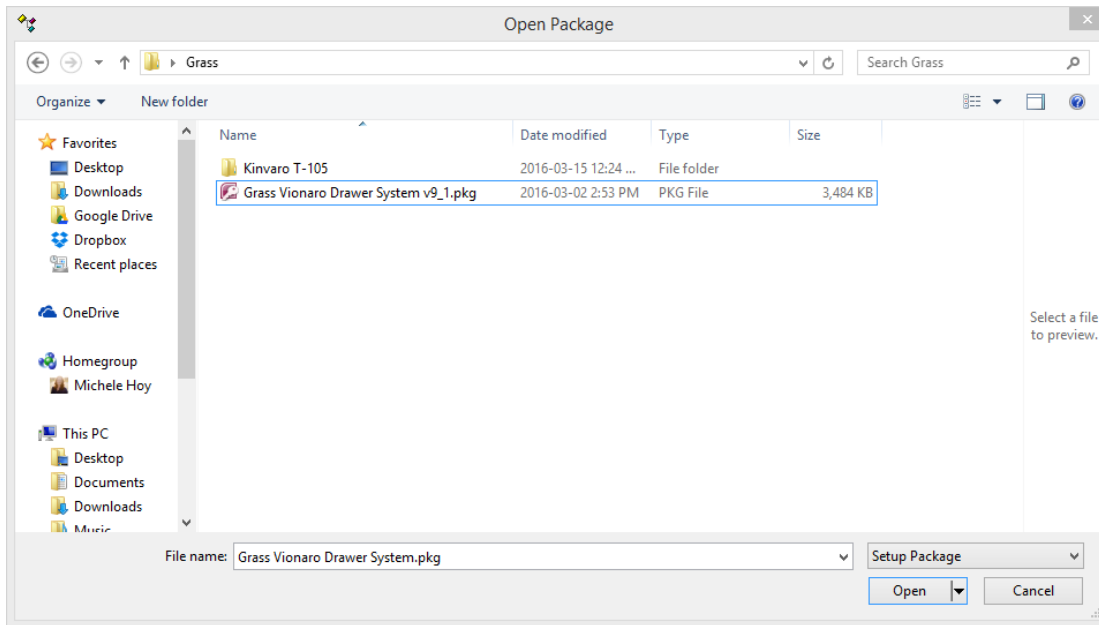
At the Solid splash screen, click the Utilities Tab and then select 'Setup Package':



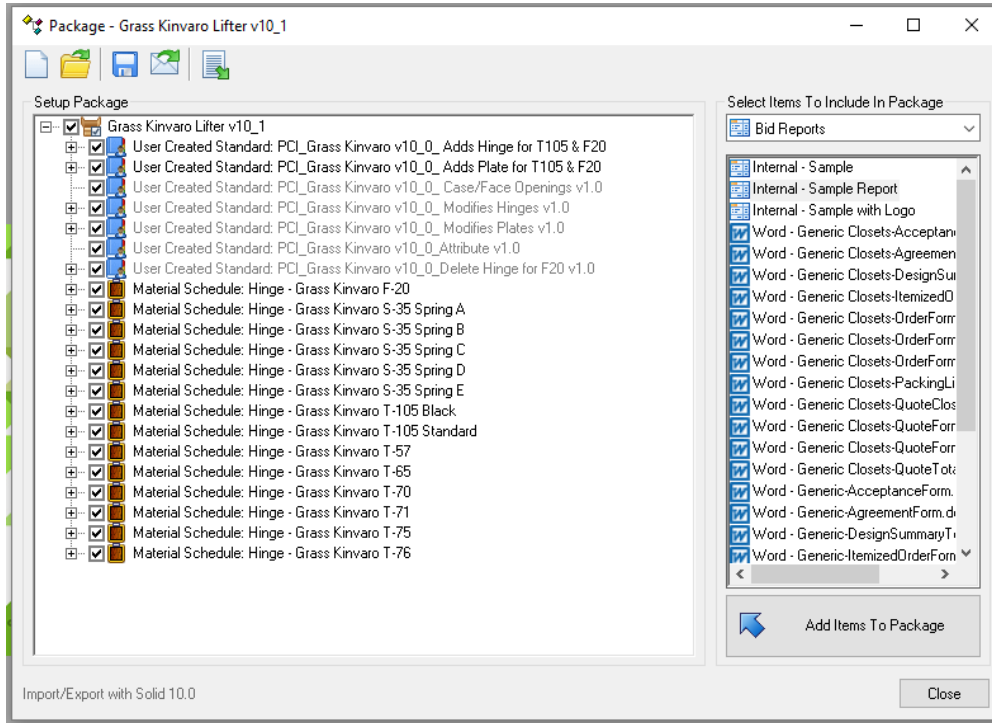
The 'Package' utility will open on your screen:




Click on the 'Open Existing Package' button  and the Open Package screen will appear. Locate the Grass Package, select it and then click 'Open' .

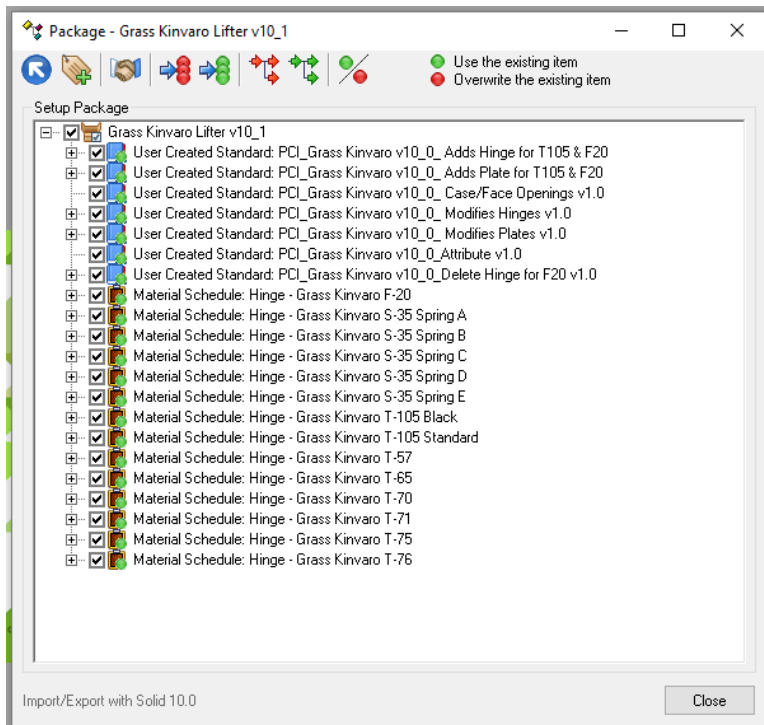


The Package window should now display the contents of the **Grass Kinvaro Lifter** Package and should look like this:




Next, click the 'Swap


Between Creation and Import Modes' button  to switch to 'Import mode'.






Please note the following details:

NOTE:  Unless otherwise specified, it is recommended that this check box be checked for each item when importing this package.

This icon  indicates that this item does not currently exist in your database and importing it will not have any effect on existing database objects.

The icon  indicates that the item already exist in your database and the Package Utility will use that item instead of re-importing it.

The icon  indicates that an existing item will be overwritten with the same item in this package.

NOTE: you must click on the  or  buttons to overwrite items in the package. See Import Options below for more details.

### Grass Package – Import Options

There are five options in the toolbar, which allow you to choose how to import a Setup Package.



**Prefix The Item Names** – If selected, this option allows the user to assign a Prefix to each item imported with this Package.



**Overwrite All Matches With Package Contents** – Will overwrite all existing items in your database with the contents of the Package.



**Use Existing Items For All Matches** – Will use all the existing items in your database rather than overwriting them with the Package contents.



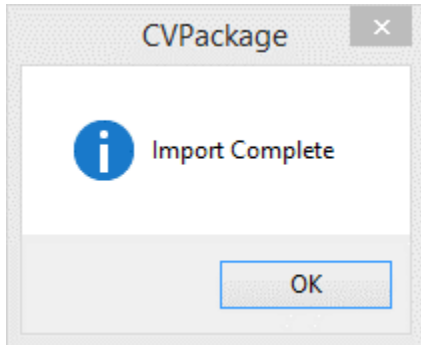
**Overwrite Child Matches With Package Contents** – Will overwrite all existing children of items in the Package that match those in your database.



**Use Existing Items For Child Matches** – Will use all the existing children in your database rather than overwrite them with the Package contents.



**Turn On/Off Overwrite Mode** – Allows you to overwrite existing items by selecting them individually. This will cause items in the Package to either overwrite the existing item or to use the existing item.



Once the package is imported, you will be informed that you have successfully imported the Package into Solid.

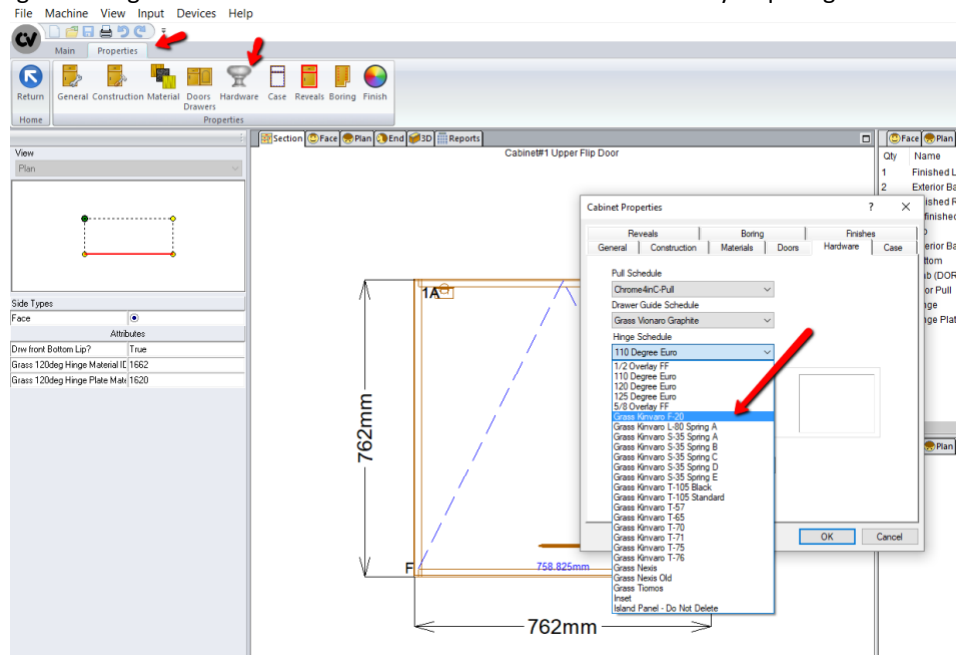
### Grass Package – Network Installations

With a Cabinet Vision Network Installation, this package can be imported at the Server or at any workstation and will become available for use on all workstations.

No additional steps are required for network installations.

### Grass Package – KINVARO Lifter System Notes

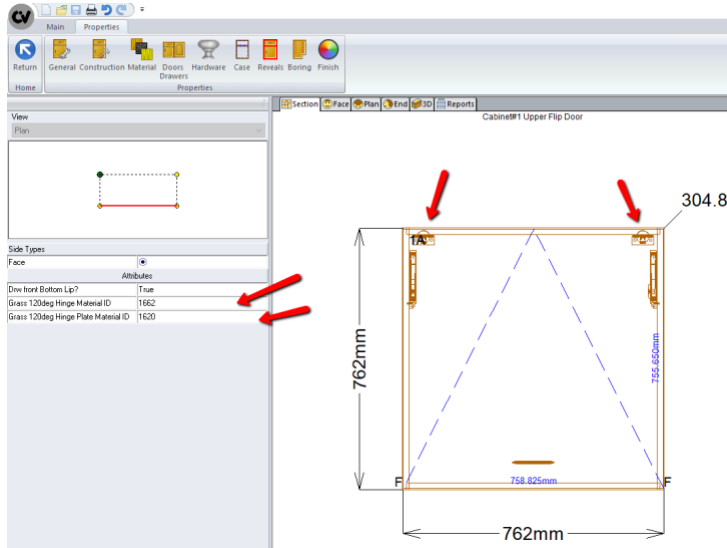
- **Material names:** The UCS's are built to look at material names. If you change material name, you will need to change it in the UCS's.
- Change the Hinge Material Schedule at Cabinet level for each assembly requiring a lifter:





## KINVARO T - 105

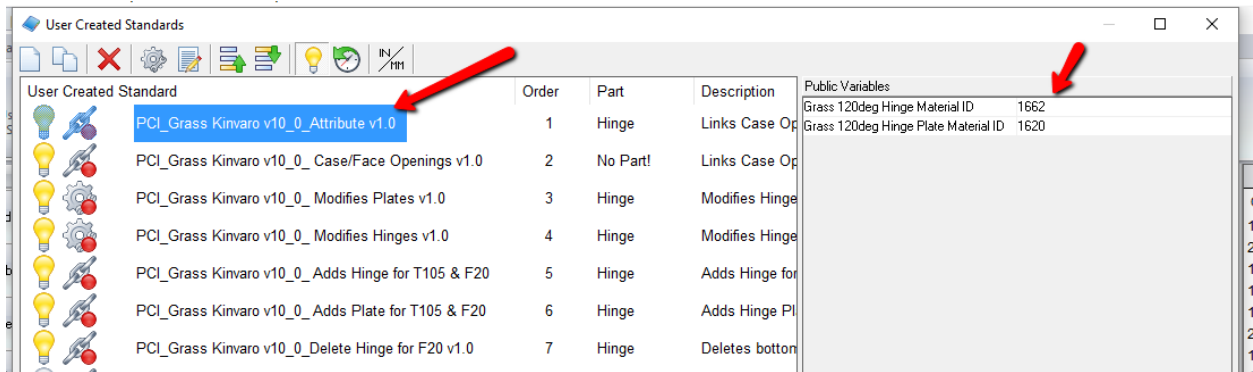
- The T-105 setup has the lifter hardware, as well as, a 120deg hinge and plate. Because the lifter is the 'Hinge' and the 'Plate', a UCS was required to add the 120deg hinges.
- There are 2 attributes at the cabinet level, to setup the Material ID for both the Hinge and Plate:



### NOTE:

You will need to go to the material manager to obtain the material ID for the hinge and mounting plate you would like to use.

- To default the hinge and mounting plate, so you do not need to set it every time (but you still have the ability to change it on a per cabinet basis), go into the User Created Standards section and change the IDs # as shown below:



## KINVARO F - 20


- The F-20 setup has the lifter hardware, as well as a 120deg hinge and plate. Because the lifter is the 'Hinge' and the 'Plate', a UCS was required to add the 120deg hinges. **See the notes above to set the ID# for the 120 deg Hinge and Hinge Plate.**
- The Lifter Position will adjust based on the height of the cabinet and as outline in the Grass height requirements for the F-20. **At this time, the lifter arm will not lengthen or shorten, but the boring is correct.**

## Using Kit Materials

Some materials may include the necessary materials to complete the assembly, which is inserted as a Kit. Adding these as a Kit, enables these items to appear in a material summary report for tracking, bidding and ordering purposes.

To modify these:

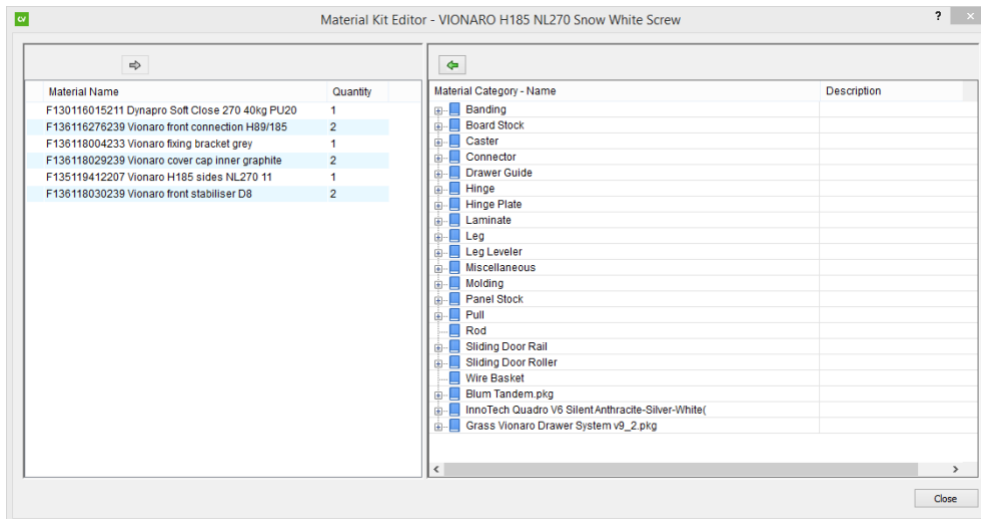
From the Material Manager, double click on the material to open the Material Properties window. (You can also right click on the Material and choose Properties)

Click on the Kit icon  to open the Material Kit Editor window.

In this image you can see the items that make up a complete VIONARO H185 Assembly in Snow White.

To add an item, highlight it in the Right Pane and press the Left arrow.

To remove an item, highlight it in the Left Pane and press the Right arrow.



**IMPORTANT:** Adding and removing materials from Kit, **DOES NOT** modify machining or the models!!  
Kit is for material lists and pricing **ONLY!**

## Pricing

The materials included in this package, have \$0 values for pricing. Be sure to go through all of the materials you will be using, and assign accurate pricing for your shop.

You do not need to add pricing to the Assemblies, just the kit items. (The actual material with SKU #'s)

## Models

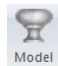
**\*\*\*NOTE: Not all Versions of Cabinet Vision have this capability!\*\*\***

Each Lifter Hinge and Plate includes 3D models used to visually represent the KINVARO Lifter System.

It is recommended that you should not modify these, however if you wish to examine them:

From the Material Manager, double click on any of the Drawer Box Assemblies to open the Material Properties window. (You can also right click on the Material and choose Properties)



Click on the Model icon  to open the Model Editor.

As you can see in the image, there is a lot of info! Along with the models, there are some extra boring, as required, that has formulas so it will adjust accordingly in the jobs!

: